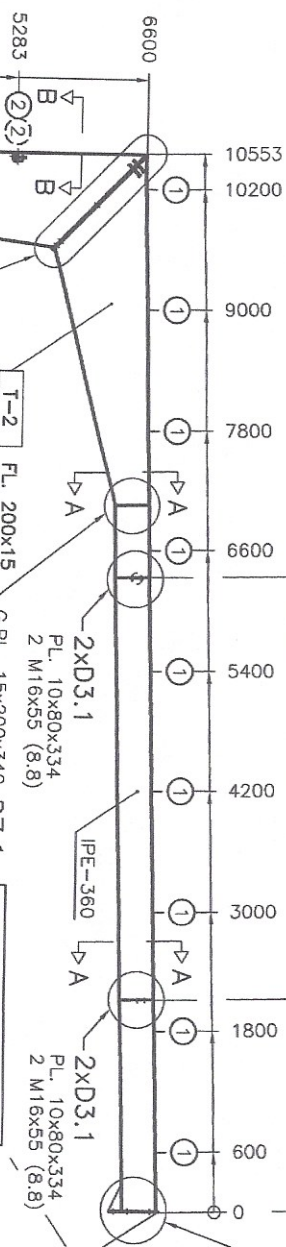


1.4'



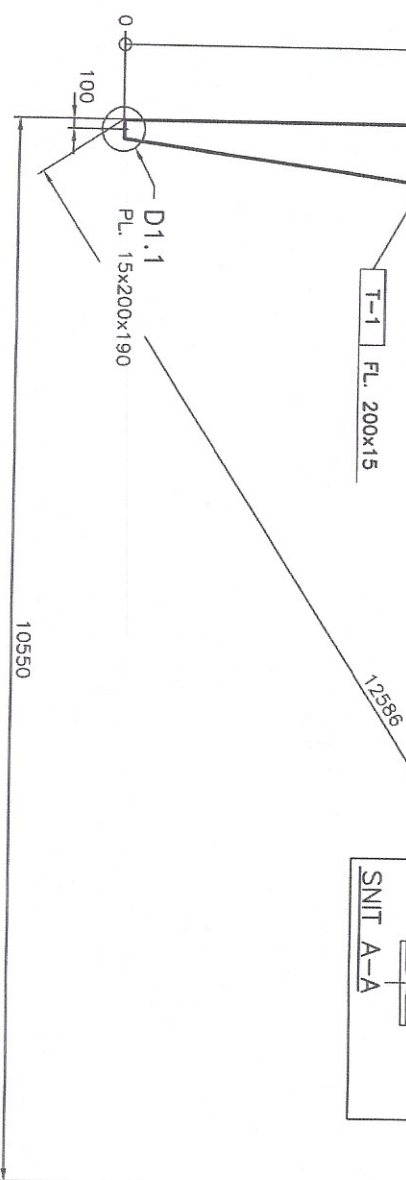
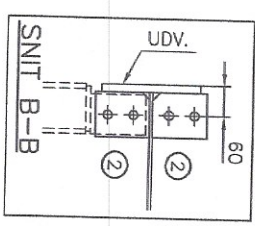
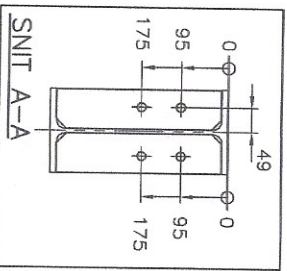
MP LINE FOR DETAILS D3.1

D2.1
6 M24x90 (8.8)
PL. 20x180x508
A.P.L. 10x125x250/88.6'

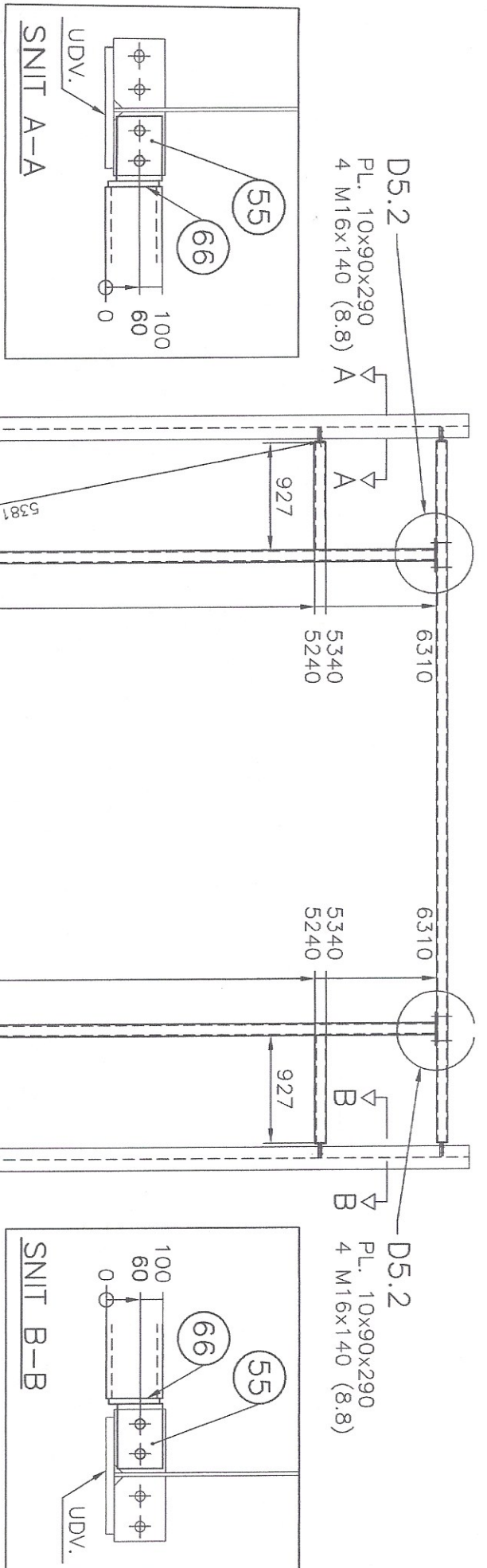


T-2 FL. 200x15
G.P.L. 15x200x340 D7.1

D8.1
HJ2RNE H=950
2xPL. 15x200x1339
10 M20x75 (8.8)



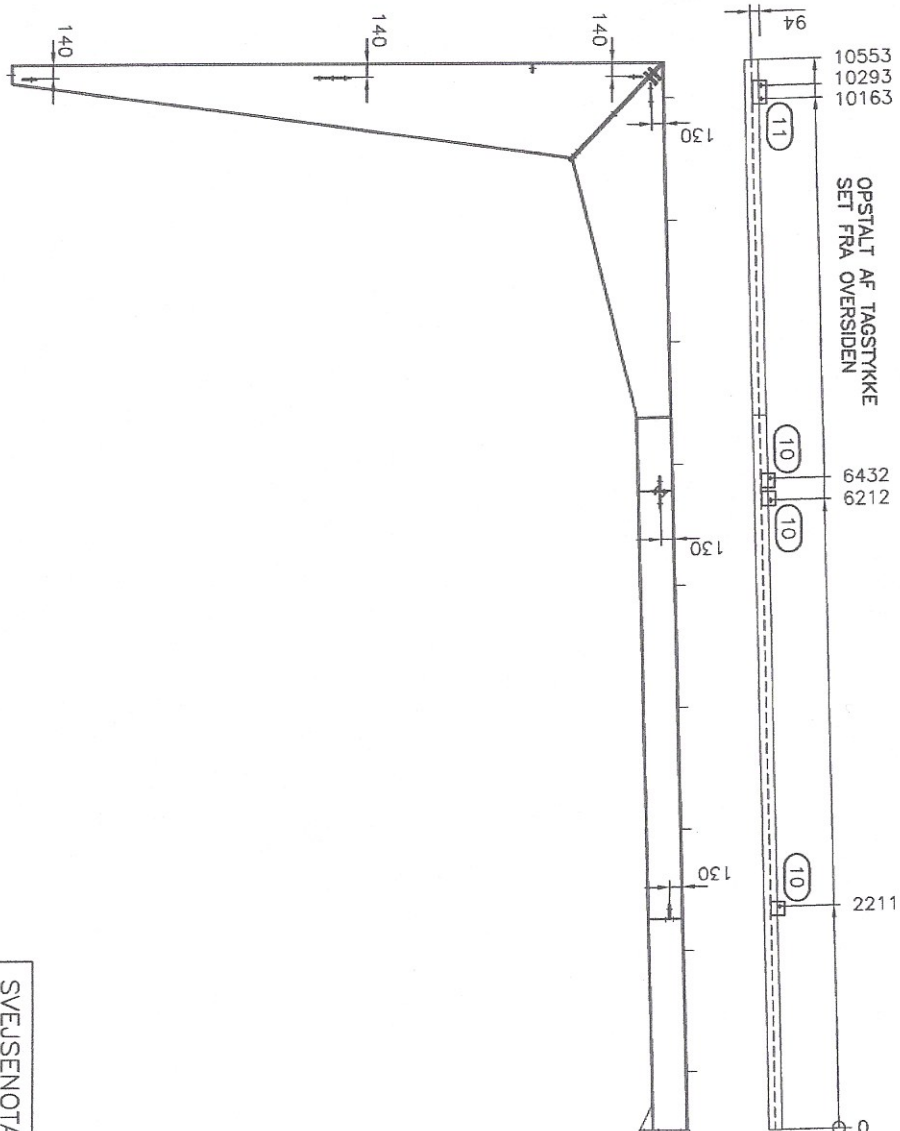
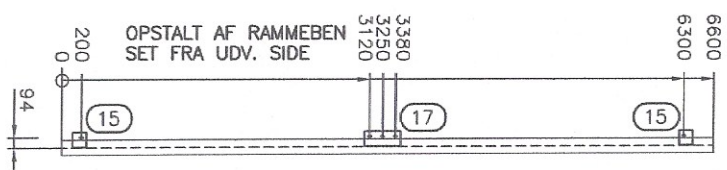
DANSK STYRKONSTRUKTION	595A01
EMNE:	GRUNDTYPE
18 STK HALVRAMMER	
11 STK SOM VIST HER	
SAG NR:	34.595
DATO:	14.01.97
INT:	RH
TEGN.NR:	1



- 1 2 x 1 STK. PORTS?JLER RHS 100x100x10, SAV 6285
+ 2 x 1 STK. RHS 100x100x10, SAV 927
- 2 2 x 1 STK. PORTS?JLER RHS 100x100x10, SAV 6285
+ 2 x 1 STK. RHS 100x100x10, SAV 927

595A22

DATO: 14.01.97	TEGN.NR: 22
INT: RH	
SAG NR: 34.595	
EMNE: PORTKARM	
DANSK ST?LKONSTRUKTION	



SVEJSENOTAT!
SVEJSNING V/VIND-X BESLAG:
ALLE VIND-X BESLAG Δ 0=5
ALLE UDFØRRES I SPÆKKLASSE A